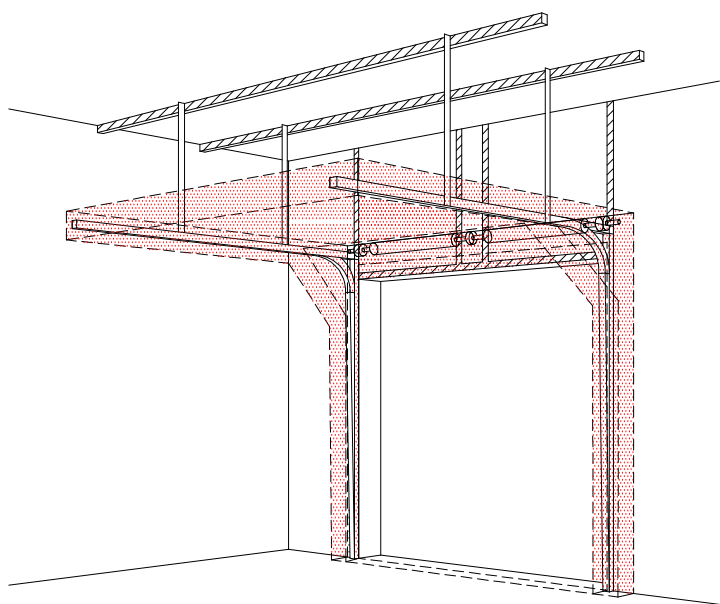
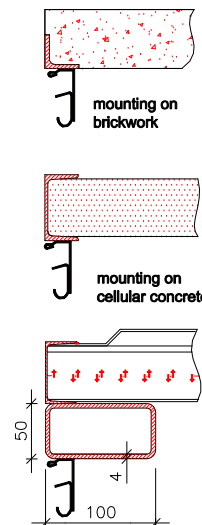
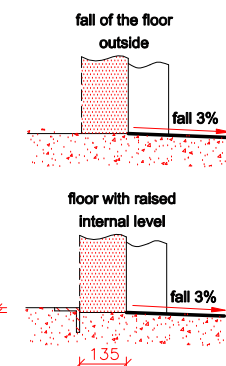
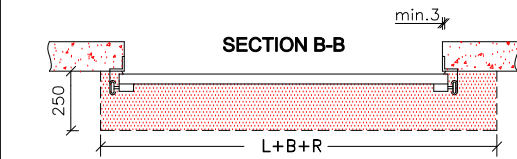
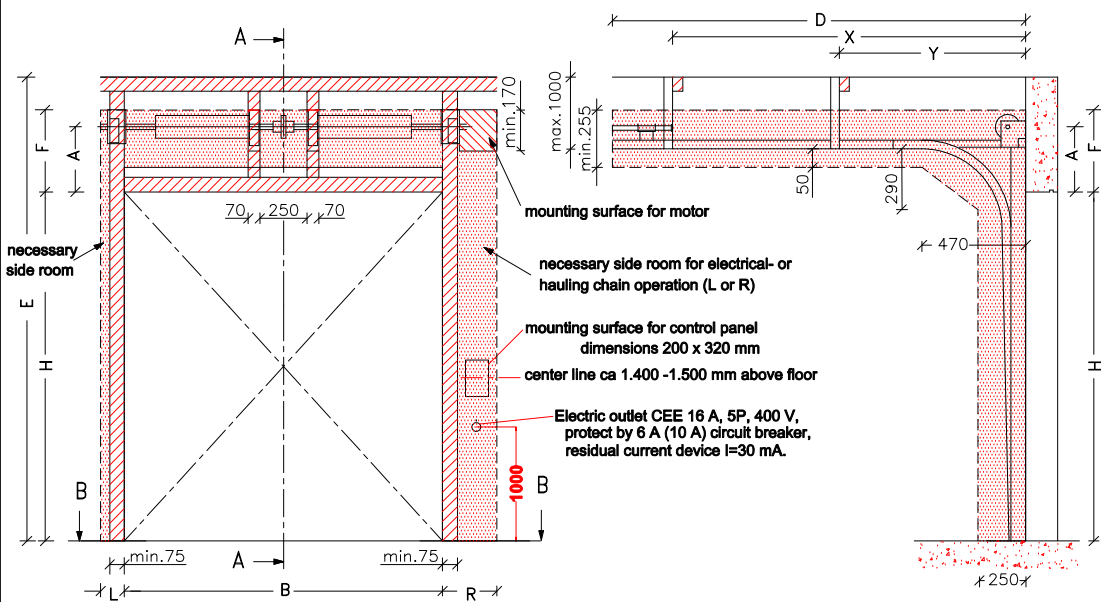


INTERIOR VIEW

SECTION A-A

STANDARD LIFT SYSTEM (SL)



NOTE: Mounting surface must be flat and massive and all mounting surfaces must be in one level. Furthermore the opening must be plumb and square. Floor area must be flat and horizontal.

WORK TO BE CARRIED OUT BY CUSTOMER, UNLESS IN ADVANCE OTHERWISE IS AGREED IN WRITING.

- Constructional :**
- Supply and fix mounting frame and mounting surfaces for the rails and the spring packet in case of aerated concrete or sandwichpanels etc.
 - Mounting possibilities for the horizontal rails up to 1 meter above the rails must be provided.
 - Necessary mounting surface and free room as shown.

Electrical supply required to be : (for electrical operated sectional doors)

- 400V, 3 phase neutral and earth terminating, provided by euro plug socket.
- Provide suitable mounting surface for control panel, dimensions 200 x 320 mm

NECESSARY MOUNTING SURFACE
 MOUNTING SURFACE FOR MOTOR
 NECESSARY FREE ROOM

UNITS in mm			
B = Opening width	Manually operated		Free room above lintel (min.)
H = Opening height	L/R	Both sides	min. 125
F = Free room above lintel	D	Back room	H+490
A = Heart axis above lintel	Electrical- or hauling chain operated		
L = Free side room LEFT	L/R	Motor-or chain side	min. 375
R = Free side room RIGHT	D	Back room	H+660
D = Back room	Hanging point, if D<3000		
X = 1st hanging point	X	Hanging point	H
Y = 2nd hanging point	Hanging points, if 3000=<D<4500		
Z = Additional spring mounting	X	1st hanging point	H
	Y	2nd hanging point	X/2
	Hanging points, if D>=4500		
	X	1st hanging point	H
	Y ₂	2nd hanging point	(X/3)*2
	Y ₃	3rd hanging point	X/3
	Additional spring mounting		
		X	if B< 2000 - INSD-1 spring (SPR-1)
		Z	if 2000>=B<6000 - INSD-2 springs (SPR-2)
			if B>=6000 - INSD-4 springs (SPR-4)

Designed by: P.KAMENICEK	Checked by: R.KRIZ	Approved by - date: 29.11.2011	File name: STP	Date: 30.6.2006	Scale: -	Sheet: -
-----------------------------	-----------------------	-----------------------------------	-------------------	--------------------	-------------	-------------



INSTALLATION_DRAWING

STANDARD LIFT-SYSTEM (SL)	Code: 010-1	Version: 1148
---------------------------	----------------	------------------