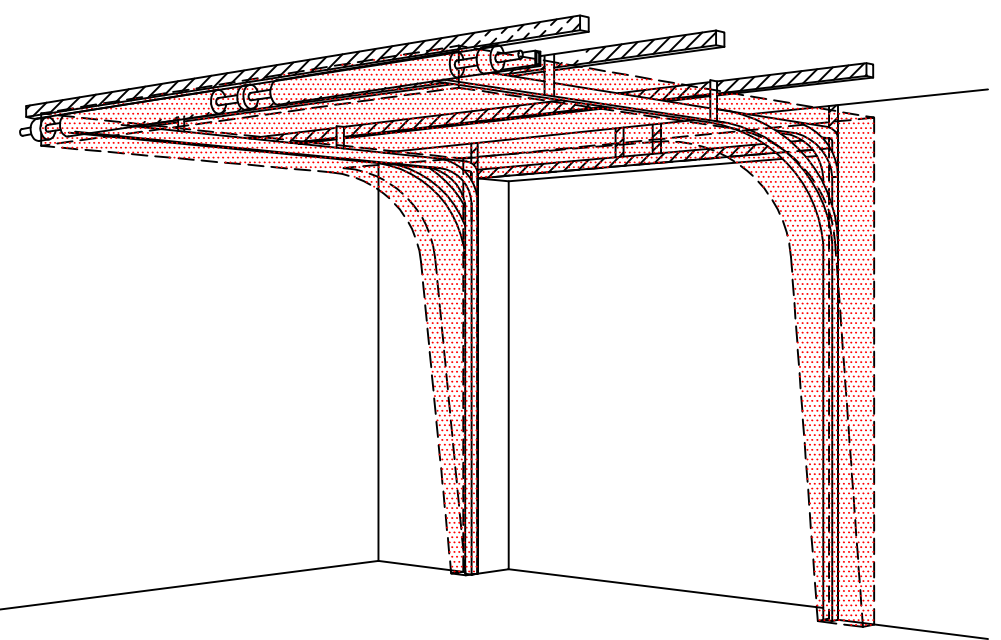
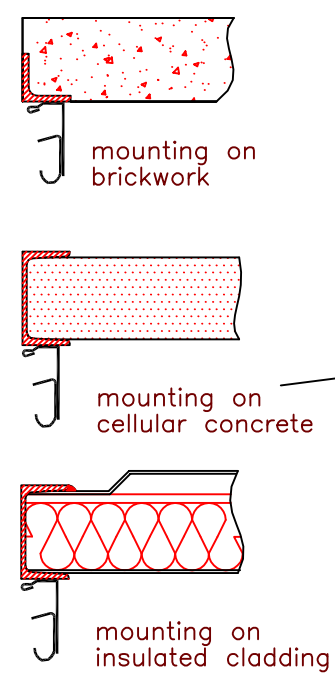
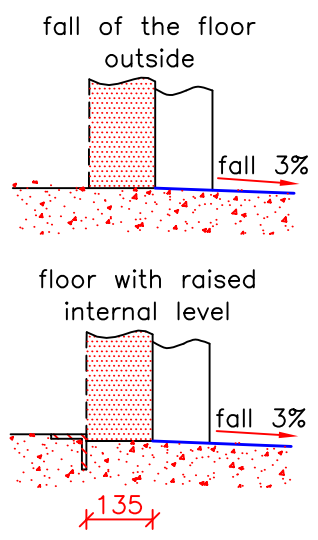
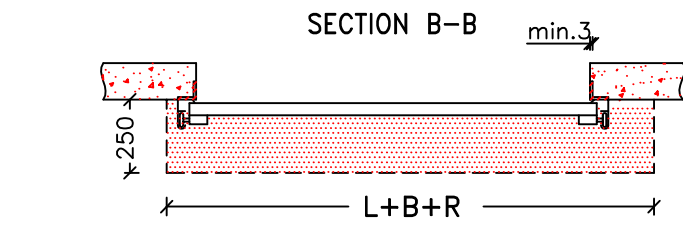
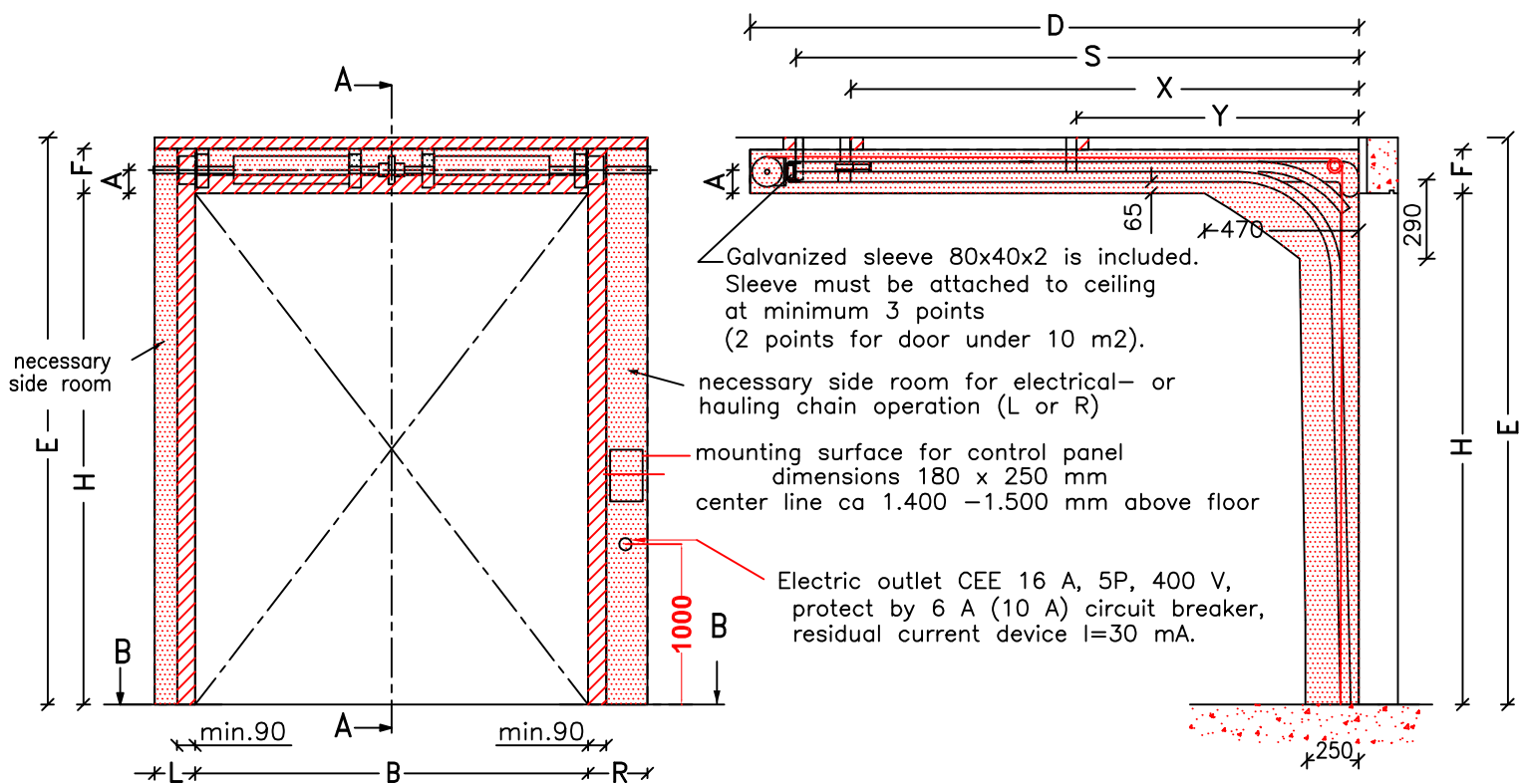


INTERIOR VIEW

SECTION A-A

LOW LIFT SYSTEM (LL-CE)
cables INSIDE



- NOTE 1:** Mounting surface must be flat and massive and all mounting surfaces must be in one level. Furthermore the opening must be plumb and square. Floor area must be flat and horizontal.
- NOTE 2:** Motor- or hauling chain operated door must be equipped with tension set 688CR (for closing door), which is fitted always on right side (depends not where is motor/hauling chain)
- NOTE 3:** Dimensions: B max=5000 mm, H max=5000 mm, max.24 m² (300 kg)

WORK TO BE CARRIED OUT BY CUSTOMER, UNLESS IN ADVANCE OTHERWISE IS AGREED IN WRITING.

- Constructional :**
- Supply and fix mounting frame and mounting surfaces for the rails and the spring packet in case of aerated concrete or sandwichpanels etc.
 - Mounting possibilities for the horizontal rails up to 0,5 meter above the rails must be provided.
 - Necessary mounting surface and free room as shown.

Electrical supply required to be : (for electrical operated sectional doors)

- 400V, 3 phase neutral and earth terminating, provided by euro plug socket.
- Provide suitable mounting surface for control panel, dimensions 180 x 250 mm

NECESSARY MOUNTING SURFACE MOUNTING SURFACE FOR MOTOR
 NECESSARY FREE ROOM

UNITS in mm			
B = Opening width	Manually operated		Free room above lintel (min.)
H = Opening height	L/R	Both sides min. 150	F Manually operated 230
E = Interior height	D	Back room H+1250	F Motor-or chain side 230
F = Free room above lintel	Electrical- or hauling chain operated		Heart axis above lintel
A = Heart axis above lintel	L	No motor/chain min. 150	A 110
L = Free side room LEFT	R	No motor/chain min. 180	Interior height
R = Free side room RIGHT	L/R	With motor/chain min. 400	E H+F+70
D = Back room	D	Back room H+1250	Hanging points for sleeve 80x40x2
X = 1st hanging point	Hanging point, if D<3000		S H+1020
Y = 2nd hanging point	X	Hanging point H	Hanging points, if D>=4500
Y₃ = 3rd hanging point	Hanging points, if 3000=<D<4500		X 1st hanging point H
S = Hanging points for sleeve	X	1st hanging point H	Y₂ 2nd hanging point(X/3)*2
	Y	2nd hanging point X/2	Y₃ 3rd hanging point X/3

Designed by: VLADIMÍR_TELENSKÝ	Checked by:	Approved by - date:	File name: INSD	Date: 30.6.2006	Scale: ---	Sheet: A3
-----------------------------------	-------------	---------------------	--------------------	--------------------	---------------	--------------

INSTALLATION_DRAWING

LOW LIFT (LL-CE)

Code: 050-5	Version: 1-01
-----------------------	-------------------------