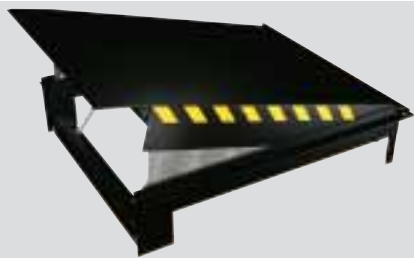


# DLH dock leveller



The DLH is an electro hydraulic dock leveller with a hinged (swing) lip, which is used for bridging the difference in height and distance between the loading bay and the vehicle floor. The platform as well as the lip is powered hydraulically.

## Materials

- The platform is made of durbar plate 6/8 (S235JRG, St-37) and the lip is made of durbar plate 12/14 (S355JRG, St-52). Both comply with the high quality standards;
- Depending on the width, the DLH is strengthened in the longitudinal direction by means of 10 or 12 bent profiles.
- All DLH dock levellers are provided with a solid self supporting frame which enables numerous mounting arrangements
- The frame is provided with a protective modular front beam in order to protect the hydraulics and to absorb the forces created by an emergency stop;
- The platform is powered by two hydraulic cylinders. The lip is powered by a separate self damping cylinder;
- The lip is fitted with a self-cleaning open hinge construction;
- The cylinders are designed to resist a pressure of 1200 bar and a hose burst valve is integrated into the main cylinders;
- The hydraulic system is completely closed and cannot be affected by dirt, sand or dust.

## Dimensions

Platform length	Construction height	Effective working range	
		Above dock	Below dock
2000	600	228	307
2500	600	303	298
3000	600	337	292
3500	600	356	288
4000	600	282	287
Platform width: 2000 or 2250 mm			
(All dimensions in mm, range calculated with 100 mm thick bumpers)			

## Technical specifications

Standards	CE
Capacity	40 kN
Construction height	600 mm
Lip length	400 mm
Lip angle	(approx. 4°) 45 mm
Motor	0,75 kW
Power supply	400 V/ 50 Hz / 2,5 A
Control circuit	24 V DC
Protection class	IP 54
Working pressure	approx. 70 bar
Outside diameter main cylinders	65 mm
Outside diameter main cylinders L > 4500	110 mm
Outside diameter lip cylinder	55 mm
Operating temp.	between -30° and +50° Celsius
Standard colour	RAL 9005 (black)

## Options

- Various types of pit constructions;
- DLH as box model;
- Tapered lip on both sides;
- Capacity 60 kN;
- Lip length 500 mm;
- Air seals on three sides of platform;
- RAL colour as required;
- Return to rest position with push-button

## Standard safety provisions

- Fully hydraulic safety stop;
- Emergency stop switch with reset facility;
- Non retractable sliding toe guards;
- Robust lip keepers for transverse movements (cross traffic);
- Black / Yellow safety markings;
- Non-removable maintenance strut;
- Motor safeguards by means of a thermal relay;
- Hose burst valve built into cylinder;
- Control panel instruction symbols.

## Building-in possibilities

Because of varying client specific requirements and constructional elements a large range of build-in possibilities are available. By making the correct choice, considerable cost savings can be made. Detailed plans are available upon request.

